

# FESPA NEWS

Friends of East Suffolk Performing Arts

48th issue

Summer 2014

Sidi asks:

## HOW CAN YOU POSSIBLY BE A THEATRE *LOVER* AND NOT BE A THEATRE *FRIEND*?

I usually use this space to write a message to FESPA members. But I know that this Summer issue of FESPA News is also distributed freely to all our theatre goers, whether they are members or not. So I thought I'd make an exception this time and use my letter to explain what FESPA is, why it is so important to the future of the Summer Theatres and why I think you should join!

The fact is that no seasonal repertory theatre can subsist on ticket revenues alone—however tightly it ties its budget shoestrings. It needs other funding either from grants or from friends. The Summer Theatre does not qualify for grants so it needs its friends—badly! And that is first and foremost what we exist for.

We are also a registered charity and we run a wonderful bursary scheme that helps out local talented youngsters with the costs of attending performing arts courses.

To become a *Friend* all you do is pay a modest £10 annual membership fee and fill out the blue form. If you're a tax payer you can also Gift Aid your subscription, letting FESPA benefit even more.

It's not all one way, though. You get plenty out of it too... As a Friend you will have priority booking rights well ahead of the crowds. You'll also benefit from special Friends-only discounts. You'll receive three newsletters like this one each year and, if you wish, get regular email updates as well.

We have social events, too, from time to time—like our pre-season garden party. And many *Friends* enjoy helping with practical jobs, like running stalls at our fund-raising fete, distributing theatre publicity material, helping to stuff envelopes or doing hand deliveries.

In other words, you can get involved just as much or as little as you like. One thing I can guarantee...

The sheer satisfaction of knowing you are doing something important to keep live theatre alive...

So what about it? Please join FESPA today.

Sidi

Sidi Scott, Chairman, FESPA



**PLEASE DO ALL YOU CAN TO SELL ALL THREE BOOKS OF GRAND DRAW TICKETS... IF ALL ELSE FAILS... BUY THEM YOURSELF!**

Another crop of great prizes again this year. Remember this is FESPA's prime, once-a-year chance to top up its charity coffers. Draw takes place at the end of the FESPA Theatre Fete on 6 July on Southwold Common. More about both on page 6.

## FOR YOUR 2014 SUMMER DIARY

**Monday 26 May** - Public box office opens for Southwold Summer Theatre season at St Edmund's Hall, Southwold.

**Friday 13 June** - Aldeburgh Festival opens

**Saturday 28 June** - Southwold Arts Festival opens (see back page)

**Sunday 29 June** - Aldeburgh Festival closes

**Tuesday 1 July** - Public box office opens for Aldeburgh Summer Theatre season at the Jubilee Hall.

**Thursday 3 July** - *Old Herbaceous*—The Summer Theatre's special contribution to the Southwold Arts Festival. See back page.

**Friday 4 July** - 6.30. *Friends'* Evening at 'Woodleys', The Common, Southwold. Bring along a plate of eats to share. Enjoy a drink and a chat with members of the Company and fellow *Friends*. Please note new venue. Full details page 3.

**Saturday 5 July** - Southwold Arts Festival closes

**Sunday 6 July** - FESPA Theatre Fete at the Godell Pavilion, Southwold Common, Starting at 12.00 noon. Please note new venue and earlier start. (See page 6)

**Wednesday 9 July** - Southwold Season opens with *Taking Steps* by Alan Ayckbourn

**Thursday 24 July** - Aldeburgh Season opens with *Taking Steps* by Alan Ayckbourn

**Sunday 10 August** - An evening of Words & Music at Southwold Theatre. With Jill Freud, Richard Frost and 'The Girls'. Starts 7.00pm. £10 including complimentary glass of wine.

**Saturday 30 August** - Last night in Aldeburgh: *The Late Edwina Black*

**Saturday 13 September** - Last night in Southwold: *The Late Edwina Black*

THE COMPANY OF 2014 2 • FRIENDS EVENING 3 • IMOGEN SLAUGHTER Q&A 4 • JOHN VEITCH TRIBUTE 5  
AGM 5 • THEATRE FETE 6 • BURSARY UPDATE 7 • 'OLD HERBACEOUS' 8

# CLASSIC THEATRE FOR A MODERN AUDIENCE

The Summer Theatre's new strapline sums up the Company's determination to emerge from the recession with optimism and a clear, sustainable mission, explains Mark Sterling.

In the spring of 2013 it looked like the forthcoming season would be a good one. And it was – artistically at least. We produced five excellent productions that were all well received by those who saw them. Unfortunately, whether because of the very long and cold winter and spring, or the tail end of the recession, the season was not a commercial success and it is only due to the generosity of FESPA and others that we are able to continue.

Although the green shoots seem to be sprouting in the economy and people are feeling generally more optimistic about the future, we can't afford to be complacent and so we have programmed what I think is a very popular season in the hope that we can attract the many holidaymakers who don't regularly visit the theatre. It is gratifying that we have already seen evidence that a lot of people have booked for all five shows whereas in recent years they may have been a bit more cautious about which plays they want to see. Many of those early bookers are FESPA members and so we thank you for showing your support in this way.

This year, we are introducing a new strapline: "Classic Theatre For A Modern Audience" which puts in a nutshell what it is that we do. Classic theatre at its best – and I believe we do produce it to a very high standard – depends on the dedication, energy and enthusiasm of those who produce it. We are continually fortunate to benefit from a strong core of actors, directors and staff who have been fiercely loyal to us over the years. Once again, it is they who are the foundation of the 2014 company.

**Michael Shaw** first appeared here in 2002 when he played the dual lead roles in *Double Double*. This will be his tenth season with us but that doesn't mean we reward his longevity with an easy ride. Michael will be appearing in three plays: firstly as Roland, the hard drinking property developer of *Taking Steps*; then as the put-upon Lloyd, the director of the play-within-the-play of the hilarious *Noises Off*; and finally as Inspector Martin, the lugubrious policeman investigating the death of *The Late Edwina Black*. It's safe to say you'll be seeing a lot of Michael this season!

Joining him in *Taking Steps* are **Imogen Slaughter**, back for her fifth season as Roland's bored wife, Elizabeth and **Jamie Chapman**, a company stalwart since 2008, as her hopeless brother, Mark. **Rosanna Miles** as his ditzy fiancée, Kitty, is back for the sixth time; **Simon**

**Snashall** – last seen in *The Curse of Dracula* in 2012 – returns for the eighth time, now playing builder Leslie; and finally, in only his fourth season – relative newcomer **Iain Ridley** is the hapless solicitor, Tristram.

*Taking Steps* is one of Alan Ayckbourn's earliest plays and comes closer to broad comedy than many of his more recent ones. It is to be directed by Richard Frost.

All six actors in *Taking Steps* will then move into *Noises Off* – Michael Frayn's comic masterpiece to be directed by **Phil Clark**, back for the fifth time. **Michael** I've already mentioned as playing Lloyd, the director; **Iain** and **Jamie** play actors Garry Lejeune and Frederick Fellowes who in turn play the characters of Roger Tramplemain and Philip Brent. **Imogen** and **Rosanna** are their counterparts: actresses Belinda Blair and Brooke Ashton, playing Flavia and Vicki; and **Simon** plays Selsdon Mowbray – the amnesiac drunk who may or may not appear as the Burglar. Joining them in this complicated melée are **Kate Middleton** (her fifth season) as stage manager, Poppy; **Peter Hoggart** (season three) as company manager, Tim; and, with us for the first time, **Eliza McClelland** in the starring role of Mrs Clackett (played by Dotty Otley)... Phew!

Back to **Michael Shaw**. Going on with him into *The Late Edwina Black* – a wonderfully atmospheric period thriller, once a staple of reps everywhere – is **Peter Hoggart** as bereaved husband, Gregory Black; **Kate Middleton** as the late Edwina's companion; and **Eliza McClelland** as housekeeper Ellen. The play is to be directed by **Richard Frost** who, I should say, has directed for the company every season for the past eighteen years... Phew again!

Most of you are aware of the intricate dovetailing that has to go on in the casting process. For those of you less familiar with it, the fact that all of our shows transfer between Aldeburgh and Southwold means that actors cast in plays one, three or five cannot also be in plays two and four. Our actors are versatile but none of them can be in two places at once!

So, in the separate but closely integrated company of plays two and four, we have – taking the prize for most consecutive seasons at thirty-one – **Jill Freud**! We first see her reprising her role of Helga Van Dorf, the eccentric psychic in Ira Levin's classic thriller, *Deathtrap* where she will be joined by **Clive Flint** as solicitor Porter Milgrim. Clive is coming back for his twelfth season. With them are **Katy Federman**— first seen here as Marta Heartburn and Nefertarti in last year's *Dick*

"We are fortunate to benefit from a strong core of fiercely loyal actors, directors and staff"





Barton epic—who plays Myra Bruhl; and newcomer **Alan J Mirren** (no relation!) as budding playwright, Clifford Anderson. *Deathtrap* will be directed by **Tony Falkingham**, veteran of twenty-three seasons.

Last, but definitely not least, since I'm directing it, is *Sherlock's Last Case*, Charles Marowitz's sardonic take on the Holmes legend. At this time, we don't have a definite actor to play Holmes – Benedict Cumberbatch was strangely unavailable – but **Clive Flint** will be Watson; **Alan J Mirren**, Inspector Lestrade; and **Jill**, in her second appearance of the season, as doughty housekeeper Mrs Hudson. **Katy Federman** sparks the tale of jocular revenge as Liza Moriarty, daughter of the Napoleon of Crime. Whoever is eventually cast as Holmes will also take the leading role of Sidney Bruhl in *Deathtrap*.

I have managed to weave a dance number into *Sherlock's Last Case* – so I am pleased to say that **Sidi Scott** will be working with me as choreographer for the sixth time. **Sidi** has been involved with the Summer Theatre on and off for the past twenty-five years. And, in case you're wondering: excluding time off for good behavior, I have been around for thirty years.

#### HOW TO BOOK

Tickets for both **Southwold & Aldeburgh** theatres can be purchased by phoning: 01502 722572 (credit & debit cards now accepted).

Or by post or in person from the box office at St Edmund's Hall, Cumberland Road, Southwold IP18 6JP (Mon-Fri 12-4 pm, Sat 12-3pm). Or by emailing [bookings@southwoldtheatre.org](mailto:bookings@southwoldtheatre.org)

Aldeburgh's 'in-person' box office opens on 1 July at Jubilee Hall, Crabbe Street, Aldeburgh IP15 5BW (Mon-Fri 12-4 pm, Sat 12-3pm).

**DON'T FORGET TO ASK FOR YOUR FRIENDS' DISCOUNT**

## The Friends' Evening in Southwold Friday 4th July at 6.30

This year, our pre-season party is in the lovely garden of 'Woodleys' on the edge of Southwold Common. We have *Friend* Bettina Daniels to thank for generously offering us this super, private venue.

As usual, FESPA will provide the wine and soft drinks but we ask *Friends* to arrive with a plate of prepared food—sweet or savoury—to share.

Woodleys is just yards from Southwold High Street. Look for Barclay's Bank and the URC Church. Between the two is a passageway called 'Woodley's Yard'. Walk to the end, go through the turnstile onto the Common. Look to your right and there is Woodleys. We'll put a sign up outside the gate just to reassure you.

If you are coming by car, there is a free car park off Gardner Road. From Queen Street, turn down Mill Lane or Lorne Road and the car park is at the end—more or less directly in front of you..

For sat-nav users, the postcode is IP18 6HR.

Looking forward to seeing you.



Jill Freud with Julian Harries in the Company's 1998 production of 'Death Trap'. Jill reprises her role this season. (Photo: Stephen Wolfenden)



Michael Shaw, Imogen Slaughter, Rosanna Miles and Iain Ridley, seen here in last season's 'Not Now Darling', renew their comedy partnership this summer in 'Taking Steps' and 'Noises Off'. (Photo: Stephen Wolfenden)



### PAID JOB OPPORTUNITIES WITH THE SUMMER THEATRES

#### BOX OFFICE STAFF

We require staff to provide ticket sales to the public from the box offices in both Southwold and Aldeburgh. The box office is generally open from 12.00-4.00pm (daytimes) and 4.00-8.00 / 8.15pm (evening). We currently have a number of shifts available. We operate a computerised system for which FULL training will be given.

#### SOUTHWOLD

#### BAR / FRONT OF HOUSE STAFF

We require people to operate the bar / coffee bars at Southwold Summer Theatre between 9<sup>th</sup> July and 13<sup>th</sup> September. Usual hours of work are approximately 6.45pm until 9.45pm. We currently have a number of shifts available. FULL training will be given.

Please contact Peter on 07930 530948 or [peter@southwoldtheatre.org](mailto:peter@southwoldtheatre.org) for further information

The next issue of FESPA News will be published week commencing 18 November 2014. We'd love to publish your thoughts—about the season, about FESPA, about your newsletter or about anything else. Email [barry@fespa.co.uk](mailto:barry@fespa.co.uk)

# MEET IMOGEN SLAUGHTER

She's becoming a familiar Summer Theatre face but you've probably seen her more than you realise... on TV in *Sherlock*, *Silent Witness*, *Doctors*, *East Enders* and as Elizabeth I in David Starkey's *Elizabeth*—not to mention numerous film and stage roles.

**Q: Delighted to hear you are back with the Summer Theatre again this year in two demanding roles – your fifth season, I gather. How do you view the prospect?**

A: I am always so excited at the prospect of doing the summer season, so I am thrilled to be coming back this year. I think I am incredibly lucky. It's a fabulous way to spend the summer. Lovely people, a beautiful place and doing wonderful plays. What more could you want!

**Q: We probably remember you most vividly for your more serious roles – *Far from the Madding Crowd*, *My Cousin Rachel*... Is comedy more of a treat or more of a challenge?**

A: Both; a challenging treat! The discipline of farce in particular is actually incredibly hard, because you have to get the timing right. It is actually very tightly structured. You cannot drop the ball for one minute because otherwise everything starts to unravel! It is rather like handling a musical score: if you do get the notes and the pace right it sounds wonderful, but you can't hide bum notes. In a strange way it's much more revealing than straight plays.

**Q: We've caught you in the middle of rehearsals for *Richard III* at the Cockpit Theatre. Who are you playing and how is it going?**

A: Yes—completely the opposite end of the spectrum from farce! It is incredible and I absolutely love it. It is such a vast play. Lots of lines! I am playing Elizabeth Woodville, the wife of Edward IV and mother of the princes in the tower. She starts the play as a Queen, a wife, and a mother, and by the end she has lost her husband three of her sons and her brother, so it is emotional to say the least!



Imogen Slaughter in '*Far from the Madding Crowd*' in 2011.  
Photo: Stephen Wolfenden

**Q: Is there one single role which you look back on as a high-spot of your career to date?**

A: I can genuinely say I have got something special and new from every play I have done and loved each one for different reasons. But as far as highlights go, I understudied on *Look Back In Anger* at The National, playing Helena, and, because we were a complete cast (i.e. not playing smaller parts in the main production) we got to rehearse as a company and we had our one understudy run in the Littleton. I was incredibly crippled by nerves but it was the best feeling to step on to that stage and feel that all go. It's a super part and a magnificent play, I think. Shame it was only for one performance!

## WHY IS THERE A SUB FORM IN MY ENVELOPE?

If you find a subscription form enclosed with your copy of this issue, it's because we haven't yet received your membership renewal fee. Please act soon to ensure you continue to receive FESPA News and enjoy the benefits of membership, including concessionary ticket prices for the Summer Theatres. We know how easy it is to forget to renew—or to forget whether or not you have renewed. For this reason, our treasurer, Peter Gibbs is hoping to introduce a standing-order option over the next 12 months which should make the renewal process a little easier all round.



**Q: Do you have in your mind a particular role (or type of role) you really aspire to?**

A: I don't think I do really have a role that I burningly want to do, because I keep discovering more roles and more plays. I want to do everything! I suppose, like every actress, I would like to have a crack at Lady M and Cleopatra in the Shakespeare repertory, and I would love to do some Coward: I think his characters are so flawed, so humanly fascinating.

**Q How does the experience of working at the Suffolk Summer Theatres compare with other assignments you've had?**

A: I think the thing that really sets the company apart as special is the family feel it has. A bunch of actors living and working together could be ghastly! But they always manage to cast gorgeous people! So we are all very much working together and looking after each other. I have made some of my dearest friends through the summers spent up here and that is a really lovely environment to create in.

**Q I understand the Slaughters are something of a theatrical dynasty. Can you tell us something about them? And what was it that convinced you to take up the profession yourself?**

A: Well I am not sure about 'Dynasty'! But, yes, it is very much in the blood. My Great Uncle was Tod Slaughter who is most famous for playing the original Sweeney Todd and various other melodramatic villains. He also ran his own theatre company and was an 'actor manager' the like of which we don't really get any more. My father became a headmaster, but he was a very good actor and, while at Cambridge, was in the Footlights with Peter Cook and the Marlow Society with Ian

McKellen and Derek Jacobi among others. And now my niece Emily has just finished at Drama school and taken up the Slaughter mantle. So, yes, a small dynasty!

**Q: What about Imogen Slaughter the person?**

A: Oh crikey! You would need to ask Matt, my husband (and also an actor) that. He'd tell you I am not very good at not working, and I get compulsions to move furniture around if I get bored! I am also not very good at being still. I am extremely lucky to have such an understanding husband, parents, and friends who help out hugely with our two little girls which enables me to take jobs like the summer season. Both being actors means a certain amount of juggling, but life is never dull!

**Q. Tell us your idea of a perfect holiday.**

A: Well last summer Matt and I took the girls camping in Wales; it was beautiful. We were just in a farm field with 20 other tents, and the most beautiful beach just below us. It was amazing! The girls could run around and we could read and walk. It was fabulous. But we were lucky with the sunshine; I think I might be a fair-weather camper!

## DEATH OF A SOUTHWOLD LEGEND John Veitch 1925 - 2014

**W**e are very sad to record the sudden death in February of FESPA Vice President John Veitch who had been an active Friend for the best part of three decades.



John pictured in his habitual role as 'gatekeeper' at the Theatre Fete in 2012—a memorably squally occasion.

Photo courtesy of Chris Ure

John who was 88, was one of the original nucleus group of passionate supporters of 'Jill Freud and Company' who founded 'The Friends' in the '80s. He took over as Hon. Treasurer in 1995 and remained in that role until Peter Gibbs took over in 2004.

John was born in South West London, the eldest of five sons of a parson. He went to Cambridge to study history but his studies were interrupted by the war which he spent with the Royal Marines. After the war, back at Cambridge, he met and married Christine. He started his working career as a salesman with Horlicks but later moved to Shell where he became a personnel manager working in London and living in Amersham. It proved something of a culture shock for the couple when Shell posted John to Lowestoft where they bought a house on Kirkley Cliff. The trauma of the move was

heightened by the death from cancer of their eldest son, Mark, at the age of just 30. Soon afterwards, John & Christine discovered and fell in love with Southwold and decided to make their home there.

Although John was still working and commuting daily to Lowestoft, the couple became involved in community life in a big way. John was running a youth training centre in Lowestoft and was Chairman of Lowestoft FE College and of the Chamber of Commerce. He was also a Samaritan. As retirement approached he immersed himself more and more in Southwold life, becoming treasurer of several local voluntary organisations, including The Friends, and an active member of Blythburgh Church.

Christine died in Southwold after several years of ill health, cared for by John. In recent years he found happiness again with his second wife, Gill, before, sadly being widowed for a second time.

John was Chairman and then President of the Southwold & Reydon Society until last year and remained a tireless campaigner and 'activist' for all the values and traditions he treasured in Southwold and Reydon including, not least, its theatrical life. He will be much missed.

## A SUMMER EVENING CONCERT AT WANGFORD

Join Sidi and friends at *Painting by Numbers in Words and Music*, a concert at Wangford Church on Saturday June 7<sup>th</sup> at 7.30 pm, raising money to redecorate the Church.

Among the performers are Steven Blake's string quartet, Helen Blake, piano, Martin Smith trombone, Sue Ives, clarinet, Lauren Dove, soprano, Rosemary Greenhalgh contralto, Paul Hegarty tenor, Harvey Rathbone, baritone, Caroline Cox and Barbara Horne, actresses and, of course Sidi Scott commère!

Enjoy a glass of Pimms at the bar in the interval. This will be a romp through the history of the church in words and music not to be missed with a few well-known local faces!

Tickets from Wangford's Village Store and enquiries Tel: 01502 578711

## AGM a great success in new venue

**T**he William Godell Pavilion on Southwold Common proved to be an ideal venue for our AGM on Friday 11 April and there were several complimentary comments from *Friends* who appreciated its bright, informal atmosphere. Just over 40 *Friends* attended and, once the business of the evening was done, we enjoyed a glass or two of wine followed by a wonderful talk by our guest speaker, Vetta Wise (right). Vetta is a distinguished operatic singer and teacher, best known locally as the founder and Musical Director of the Pakefield Singers and the Director of the North Suffolk Youth Choir as well as being head of vocal studies at Saint Felix School. But her talk focused mainly on her experiences as Chorus Master of the Cape Town Opera where she established a Training Programme for talented but disadvantaged young singers, many of them from the notorious 'townships'. Vetta praised FESPA for its bursary programme, emphasising the importance of altruistic financial support in enabling gifted youngsters to fulfil their potential.



### Constitutional amendment

At a brief Special General Meeting, preceding the AGM, *Friends* approved a proposed minor amendment to the Constitution, enabling a trustee who has completed two 3-year terms of office to stand for election for a further 1-year term. Subsequently, at the AGM, Sidi Scott and Peter Gibbs retired by rotation and were re-elected as Chairman and Treasurer respectively for a further one year.

Sadly, Dr Julia Allison has tendered her resignation as trustee following her appointment as Honorary Associate Professor at Nottingham University.

### Chairman's report

Sidi Scott spoke of the start of a new and interesting period for FESPA. The charity had developed much closer ties with the Summer Theatre team and its support role as 'Friends of the Theatre' is now being more overtly acknowledged in the company's publicity material. Sidi paid tribute to Emma Freud and Richard Curtis for their hospitality at Westons over the years and also expressed her delight that Ben Marriner had secured such a satisfactory arrangement with the William Godell Pavilion committee for our annual fete. She also expressed her huge thanks to *Friend*, Bettina Daniels for allowing her Southwold garden to be used as the venue for the *Friends*' Evening this summer.

Two extra FESPA events in 2013 had been particularly gratifying, the first being the Bursary showcase which was not only a great success in itself but also demonstrated the value of our bursary programme, proving, as Sidi put it, 'that we can pick 'em!' The second was our pre-Christmas supper show—a tribute to Jill's 30 years at the helm—*Jolly Berry Christmas*. A wonderful start to Christmas.

### Financial news

Treasurer, Peter Gibbs, reported a further decrease in membership during the year with 70 members failing to renew. This also has a negative impact on the amount we can claim in Gift Aid. However, *Friends* continue to supplement their subscriptions with generous donations for which we are most grateful.

Happily, net profit from the Summer Fete and Grand Draw was up by over £400 and events such as the student Showcase and *Jolly Berry Christmas* yielded an unexpected and very welcome additional profit of nearly £1,300.

On the expenditure side, our subsidy of the Summer Theatre Company increased from £13,000 to £15,000, mainly to cover a shortfall in revenue during the 2013 season.

Peter concluded by thanking Kathy Oliver who manages our database and Jenny Bird who has recently retired as Subscription Secretary. He welcomed Jenny's friend and work colleague, Margaret Tabor who has taken over this role. Thanks were also tendered to our auditor, Jack Storer, who, having agreed to continue in this role, was duly elected.





# THE FESPA THEATRE FETE



THE WILLIAM GODELL SPORTS PAVILION, SOUTHWOLD COMMON

Opposite the water towers. Enter IP18 6TB in your sat-nav

From 12.00 pm on Sunday 6th July 2014—Opened by Jill Freud

## Fete organiser, Ben Marriner, writes:



For the past 13 years we have been most fortunate to have had our fete at the Freuds' family property in Walberswick. It wasn't a large venue but it was intimate and a bit special and everyone loved coming to it. I would like to thank the family most sincerely for putting up with us for so long and I would also like to thank Angie, Emma's PA, for her support, generosity and enthusiasm over the past years.

But times change and now, in 2014, we are moving into a new era. Not only do we have a new venue but this year sees Jane Ackroyd taking over from my wife, Anthea, on the catering side and next year, Sue Tayler will take over from me. I've thoroughly enjoyed my five years and have had superb support from my committee. But I think five years is enough and it's time for a fresh look and new ideas. So I wish Sue and Jane lots of luck and they can certainly rely on my support if needed.

How we are going to get on this year only time will tell. We will be losing our gate receipts—about £450—and there will be no pony rides or dog show. But I am anticipating a much bigger

foot-fall now we are in Southwold, so we will need a lot of help from our *Friends* to stock our stalls. Particular thanks to all those who brought bottles, preserves and tombola prizes to our AGM last month to start the ball rolling. An excellent haul!

The other vital way *Friends* can help is to make sure all your Grand Draw raffle tickets are turned into money, either by selling them or buying them yourselves. The maths are quite simple: we have sent you three books; each book has five tickets at £1 each. If every *Friend* disposed of all their tickets we'd have more than £10,000 in the bank before Jill had even declared the Fete open!

A couple more important innovations this year... We're opening at midday instead of the usual 1.00 pm. So there will be lunch snacks as well as teas this year... And, for the first time ever, there will be a licensed bar, run by the Pavilion staff throughout the fete. The Pavilion will also be screening the Wimbledon Men's Final so you can catch up with the score over a pint of Adnams or a bowl of strawberries and cream.

Finally, a big thank-you to the Pavilion Management for letting FESPA have this superb venue free of charge and to the Southwold Common Trust for permitting us to use the adjacent land as a car park.



## Attractions A B C ...

**Art Gallery**—original paintings, prints and local artworks

**Belly Dancers**—all the way from Wangford

**Book Shop**—nearly new and vintage

**Bottle tombola**

**Bouncy Castle**

**Bric-a-brac** and curios

**Cakes and Home Produce**—jams, jellies, pickles, chutneys and marmalade

**Choral singing**—by 'Music Vox'

**Digital Doobries**—CDs, DVDs and small, unwanted electronic items

**Games for all**

**Garden Centre**—plants, pots and garden produce

**Grand Draw**—Don't forget to buy your tickets

**Hi-Spirits**—chances to win a bottle throughout the afternoon

**Jill's Junk**—Jill Freud's own ongoing loft clearance project

**Licensed Bar**—in the Pavilion

**Lucky Dip**

**Punch & Judy Show**

**Refreshments**—Soup & Savoury lunch snacks, strawberries & cream and our legendary teas

**Signed singing**—by the amazing Lowestoft Signing Choir

**Tarot card reading**—by Rosemary 'The Chelsea Clairvoyant'

**Tennis on the telly**—Men's finals in the Pavilion

**Third-party stalls**

**Tombola**

**Toys and Games**

**Wet sponge stocks**

## What we need from you

Please leave your contributions in **Val Anderson's garage** at 'Hedgeley', The Green, Walberswick, or in **Ben Marriner's porch** at 26 South Green, Southwold. Or contact the stallholders below directly to arrange a mutually convenient time and place. At a pinch—just bring your goods along as early as possible on the day. Any queries, call Ben on 01502 722488

**BOOKS**—Call **Michael Rowan-Robinson 01502 725223** or deposit in above locations or bring on the day

**TOYS, GAMES, PUZZLES, CHILDREN'S BOOKS**—Call **Sue Tayler 01502 725722**, or bring along on the day or deposit in above locations

**BOTTLES**—in-date alcoholic and soft drinks for the bottle tombola. Call **Ged and Mike Mcelarny 01502 726108**. They'd like them in advance to give time for ticketing.

**SPIRITS**—for our 'Hi-Spirit' bottle draws called at intervals throughout the afternoon. Call **Brian Clow 01728 454366** or use the drop-off points

**BRIC-A-BRAC**—Ken and Jill badly need new supplies of curios, crafts, collectables and vintage household goods. So into the attic with you and call **Ken and Jill Hanham 01728 453745** or drop things in to the above locations.

**CDs & DVDs** and small, working electronic items—Call **Peter & Wendy Gibbs 01502 723390**

**CAKES & HOME PRODUCE**—If you can provide some please call **Mary Rowan-Robinson 01502 725223**

**PLANTS, HOME-GROWN PRODUCE, POTS, GARDEN TOOLS**—Call **Pip & Malcolm Guest 01502 723595**

**FRAMED PICTURES, PRINTS, PHOTOS, ARTWORKS**—Something you've created or something totally off the wall—or both! Call **Barry and Viv Tolfree 01502 722582**

**UNWANTED AND UNUSED GIFTS**—as prizes for our tombola stall. Must be in as-new condition and available in advance to allow time for ticketing—Call **Paul and Wendy Thompson 01473 735344**

## OTHER WAYS YOU COULD HELP...

We can always use more **gazebos** and more **helpers** on the day—to put up stalls, move equipment, man the gate and car park, help as needed on stalls and help supervise the games. If you are able to offer your time please give Ben Marriner a call on **01502 722488**.

Could you put up a poster in your window? We'll be putting one on our website shortly. Go to [www.fespa.co.uk](http://www.fespa.co.uk). There's a link on the home page. If you'd like a supply of A4 posters to put up in shops and pubs in your area, please call Barry Tolfree on **01502 722582**. Finally... please make a special effort to sell those grand draw tickets to your friends and acquaintances. If you need more, just call Val Anderson on **01502 724609**.



*Pip & Malcolm Guest at last year's plant stall. (Photo: Chris Ure)*



*Ian Miller and Michael Rowan-Robinson's book stall—always a magnet for fete-goers.*

STALLHOLDERS AND HELPERS CAN PARK FREE IN THE SMALL PAVILION CAR PARK ON THE RIGHT OF THE BUILDING OR ACROSS THE ROAD IN THE OLD WATERTOWER CAR PARK BY KIND PERMISSION OF SUFFOLK SECRETS. YOU CAN START SETTING UP YOUR STALLS FROM 10.00 AM READY FOR A NOON OPENING.

## 2014 GRAND DRAW

### Another bumper portfolio of prizes

Our Grand Draw manager, Val Anderson, has assembled a fabulous range of prizes again this year.

Here are some of the top treats...

#### First prize:

**A week's family self-catering holiday during 2015 school hols in a lovely sea-view apartment in Walberswick (Sleeps 5-6). Dates subject to availability.**

£100 worth of vouchers to spend at The Red Lion in Southwold

An unlimited golfing day for four at High Lodge, Hinton

Meal for two at The Anchor, Walberswick

Voucher for theatre tickets for two at the New Wolsey, Ipswich

Lunch for two at Sutherland House, Southwold

Relaxing back massage at The Sanctuary, Southwold

A day in a Southwold beach hut courtesy of Emma Freud and Richard Curtis

Lunch or dinner for two at 'No 51', Southwold High Street

Meal for two at The Bell, Walberswick

Adnams Brewery Tour for two

Cream Tea for four at The Potters Wheel, Walberswick

Please send back the completed stubs with your cheque (not cash!) to Val's address on the ticket. There is no need to return any unsold tickets. Tickets will also be on sale at the fete. The draw will take place later in the afternoon.

**Val Anderson may be contacted on 01502 724609**

## THANK YOU

... to all the very generous donors of the above prizes, To the William Godell Pavilion and the Southwold Common Trust for their generosity. To Sarah at SPOTS for providing lucky dip prizes. To Derek and Teresa at the Red Lion for all their help, support and generosity. To Music Vox, The Lowestoft Signing Choir and Wangford Belly Dancers... and to all *Friends* who man stalls and donate stuff for them to sell.

# DANCING WITH MY iPad

## A letter from dancer and 2013 FESPA Bursary student, Mariella Mazzili



Those of us unfamiliar with the inner workings of the world of modern musical theatre may not realise to what extent choreography has become intimately tied up with information technology. Every dancer, it seems, now carries a tablet computer to rehearsals. There are even dedicated apps, like Stage Write, now regarded as indispensable tools by choreographers of many of the blockbuster shows of today. So it's perhaps not surprising to hear that one of our 2013 Bursary recipients, 18-year-old Mariella Mazzilli from Lowestoft, had no hesitation in using her award to

purchase an iPad. Mariella is now coming to the end of her second year at RedRoofs Theatre School in Maidenhead. She writes:

*"Thank you so much for supporting me with my studies at Redroofs Theatre School. I am so grateful for the money given. I used it to buy an iPad so I could record harmonies, dances and my work for each lesson. It's been a godsend as, in December, I had an operation as the cartilage in my knee tore! This has resulted in no dancing for a while - :( - but as I have my iPad I am able to keep up with everything by taking notes and recording bits and pieces.*

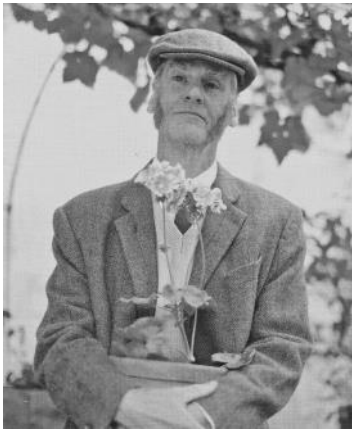
*Thank you once again—it's been such a great help."*

**Applications for FESPA 2014 Bursary awards must be in by August 3. If you wish to nominate someone in E Suffolk who needs help with their performing arts course fees, contact David Bunkell [FESPA@btinternet.com](mailto:FESPA@btinternet.com) for details.**

# OLD HERBACIOUS

The Summer Theatre is sprouting a promising green side-shoot this season

Thursday 3rd July at 7.30 in Southwold Theatre—£10



As part of the inaugural Southwold Arts Festival, the Summer Theatre Company is treating us to an 'early flowering' this year in the shape of a special performance of *Old Herbaceous*, a one-man show produced and performed by Peter Macqueen, left.

*Old Herbaceous* is the creation of Reginald Arkell who published it as a novel in 1950. It was dramatized and updated in the late 1970s by Alfred Shaughnessy, an old Etonian aristocrat who became a scriptwriter on *Upstairs, Downstairs* amongst other things. *Old Herbaceous* was first seen at Salisbury Playhouse in 1979 but this acclaimed production was developed for Theatre by the Lake in Keswick where it was first seen last spring. Set in an old greenhouse in the grounds of a Gloucestershire manor, the play centres on the special relationship between gardener, Herbert Pinnegar and his employer, Lady Charteris as he reminisces, tends his cuttings, offers gardening advice and takes the audience into his confidence. As one reviewer commented: "I challenge you not to be moved by this enchanting story of 'just a gardener'. I'd take some tissues, too."

## MARY SHELLEY & THE CURSE OF FRANKENSTEIN

Monday 30<sup>th</sup> June at 7.30 in Southwold Theatre—£12

Friends may be interested in another theatrical event taking place during the Southwold Arts Festival. It's from **Common Ground** an East Anglian company providing opportunities for young people with theatrical ambitions to work alongside established professionals. This brand new adaptation explores the journey of Mary Shelley's life whilst she is endeavouring to come to terms with her own creative struggle and at the same time deal with the grief of personal loss.

Mary Shelley, dramatist, essayist, biographer, political radical and most famously the author of *Frankenstein*, has a story to tell that is almost as remarkable as that of her own fictional creation.

Pat Whymark, a Director of the Company, is pleased to be back in Southwold having begun her professional career many years ago with *Joan Shore* in a summer season before the advent of the Jill Freud Company. She says of the new production: "It is a fascinating story of innocence and rejection, love and revenge. The actors will play characters from Mary's life and the production will be punctuated by film projection and original music. It will also include the poetry of Percy Bysshe Shelley, Lord Byron and Mary Shelley herself."

## 'SOUTHWOLD & SON'

Tales from the town's trading community a century ago

Thurs 3<sup>rd</sup> July, 11.00am, Methodist Hall, East Green Southwold

An illustrated talk for the Southwold Arts Festival by Barry Tolfree, based on the website ([www.southwoldandson.co.uk](http://www.southwoldandson.co.uk)) which he has developed with former Southwold butcher and local historian, Ronnie Waters. The event is in aid of Southwold Museum & Historical Society. Tickets are £4 (£3 for members) and are available in advance at the museum, 9-11 Victoria Street or at the door on the day.

Enquiries: [barry@southwoldandson.co.uk](mailto:barry@southwoldandson.co.uk)



Saturday 28 June—Saturday 5 July

Tickets for all the main Southwold Arts Festival events can be purchased by credit or debit card online from the festival website: [www.southwoldartsfestival.co.uk](http://www.southwoldartsfestival.co.uk)

Or by phoning: 01502 722572

Or in person from the box office at St Edmund's Hall, Cumberland Road, Southwold IP18 6JP (Mon-Fri 12-4 pm, Sat 12-3pm)

All festival events are listed on the website and a full colour brochure is now available

## FREE MONEY! FESPA IS LOSING OUT

In Autumn 2011 we launched a new way of raising funds for FESPA by joining the web-based service 'Easy Fund Raising'. The way it works is that, when you buy something online, say, from Amazon, instead of going directly to the Amazon website, you first go to the Easy Fund Raising website and then click through to Amazon.

Every time you do that, a percentage of everything you spend is donated to FESPA. And the important point is, **it doesn't cost you any more to do it that way.** It is, in short, a classic no-brainer.

In the nearly three years we've been participating in Easy Fund Raising, the website has sent FESPA £65. Nice to have but a rather modest amount you might think. You'd be right. Because all but £5 of that was actually generated by the occasional online shopping exploits of your Scrooge-like editor and his wife!

If, for example, only a paltry 100 FESPA members had done similarly, your charity would be at least £6000 richer by now. It is a real shame.

**So please give it a go. It's terribly easy. Here's what you do when you use it for the first time:**

1. Go to [easyfundraising.org.uk/causes/fespa](http://easyfundraising.org.uk/causes/fespa). You'll now be on FESPA's fundraising page and be able to see how much we've raised to date.
2. If this is your first time, you need to create an account. So click the green button at the top right of the page and complete the entry form.
3. Click the green panel saying 'I want to support a good cause', then enter 'fespa' as the name of the good cause.
4. When you are asked if you want to install the toolbar, I recommend you say yes.
5. At the top of the page there is a box saying 'Search for a retailer'. If you want to shop now, enter a retailer name in this box – for example Amazon, thetrainline, Next or whatever.

Now you can just shop as normal and the retailer will automatically make a donation to FESPA.

Once you've joined, you won't have to go through this palaver again. Just go straight to [easyfundraising.org.uk/causes/fespa](http://easyfundraising.org.uk/causes/fespa) and go shopping!

If you've installed the toolbar, it'll be even easier. You can just go straight to the shop website and, if it is participating in Easy Fund Raising, the toolbar will pop up and prompt you.

**No catches—take my word for it—so please don't pass up this easy way to raise funds for FESPA.**